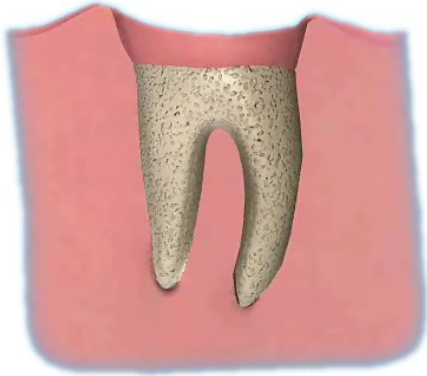


# DRY SOCKET



**Q** What is a dry socket?

**A** A dry socket occurs when the blood clot in an extraction socket disintegrates and stops the natural healing process. It happens in about 5% of extractions.

**Q** Why does a dry socket form?

**A** Some things are known to damage the blood clot such as excessive rinsing out and smoking. Other dry sockets occur for no obvious reason.

**Q** Can it be treated?

**A** This very painful but not serious condition can be treated by placing a pain relieving dressing in the socket. Antibiotics are not usually needed.

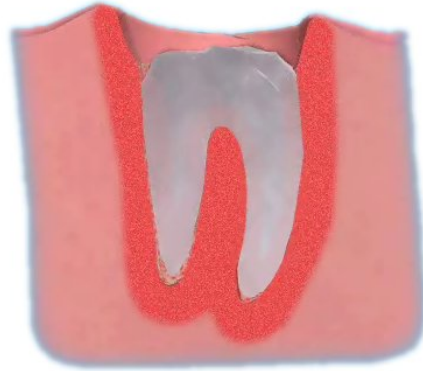


**Q** What does it involve?

**A** The aim of the treatment is to relieve pain and enable the wound to heal.

**Q** What if I don't have the treatment?

**A** The socket will eventually heal without treatment but will be very painful.



**Q** What about aftercare?

**A** The dressing placed in the socket usually dissolves away by itself.